

PRADEEP STAINLESS INDIA PVT LTD

PRADEEP[®]
ENCLOSURES &
MACHINED PARTS



- ✓ Original Equipment Manufacturer
- ✓ Customized Stainless Steel Sheet-Metal Fabricator
- ✓ Machined Parts & Components Manufacturer

About the company

- Started in 1979 the company has a turnover of over US\$ 10M
- An ISO 9001:2015 QMS certified company located in MEPZ – Special Economic Zone, Chennai.
- Comprising of two manufacturing facilities:
 - Unit - I is more than 17,800 sq. m. dedicated to the hospitality segment.



About the company

- Unit – II with a new state of the art facility has a factory area of over 4200 sq. m dedicated to the industrial (Oil & Gas, Power) sector.
- Employs more than 700 skilled and unskilled personnel supported by manual, semi-automatic and automatic machinery.

About the company

PRADEEP
ENCLOSURES &
MACHINED PARTS

Unit - I



Unit - II



About the company

ZERTIFIKAT • CERTIFICATE • 証 証 証 証 • CERTIFICADO • CERTIFICAT



CERTIFICATE

The Certification Body
of TÜV SÜD South Asia Private Limited
certifies that

PRADEEP

Pradeep Stainless India Private Limited
C3 , B7 & D1 Phase II MEPZ - Special Economic Zone,
Chennai - 600045, Tamilnadu, INDIA

has implemented Quality Management System
in accordance with **ISO 9001:2015**
for the scope of

**Manufacture of Fabricated Stainless Steel Enclosures and Machined
Metal Components for Engineering Applications**

The certificate is valid from **2021-10-01** until **2024-09-14**
Subject to successful completion of annual periodic audits
The present status of this certificate can be obtained through TÜV SÜD website by scanning/online QR code and by
entering the certificate number indicated against our logo. Further specifications regarding the status & scope of
this certificate may be obtained by contacting the certification body at info.south.asia@tuv.com

Certificate Registration No. **99 100 16401**
Date of initial certification: **2015-10-21**
Issue Date: **2021-10-01 Rev. 00**



Rajat Kaur
Head of Certification Body
of TÜV SÜD South Asia Private Limited
Member of TÜV SÜD Group



TÜV SÜD South Asia Pvt. Ltd. • TÜV SÜD House • Sub. Park • Andheri (East) • Mumbai - 400 021 • Maharashtra • India **TÜV**

COMPLIANCE DOCUMENT



South Asia

Check conformity
Add notes.

This Compliance Document is issued to:

M/s. Pradeep Stainless India Pvt Ltd.
Plot C3, B7 & D-1, Phase-II, MEPZ-SEE, Tambaram,
Chennai- 600045, India

FOR

Product : **STAINLESS STEEL ENCLOSURE**
Model No. : **Refer Annexure A**
Test Standards : **IEC 62208:2011 / EN 62208:2011**
Test Report No. : **BLR/ENE-SAF/21/1648499.00001 09/05/2021**

This is to confirm that a sample of enclosures were tested to the safety test requirements Low voltage
directive (2014/35/EU) by TÜV SÜD South Asia Pvt. Ltd.

CE After implementation of the requirements as per test report no. BLR/ENE-SAF/21/1648499 issued
to the manufacturer, preparation of the necessary technical documentation and signing of the
declaration of conformity, CE marking can be affixed on the product. Other relevant directives
have to be observed.

The document holder is responsible for the consistent manufacturing of the product in compliance with the
test sample submitted to us.


Sr. QA-PRODUCT SERVICE – ENE

Ref No. CDI1648499	Date of Original Issue 8 th May 2021	Date of revision:
-----------------------	--	-------------------

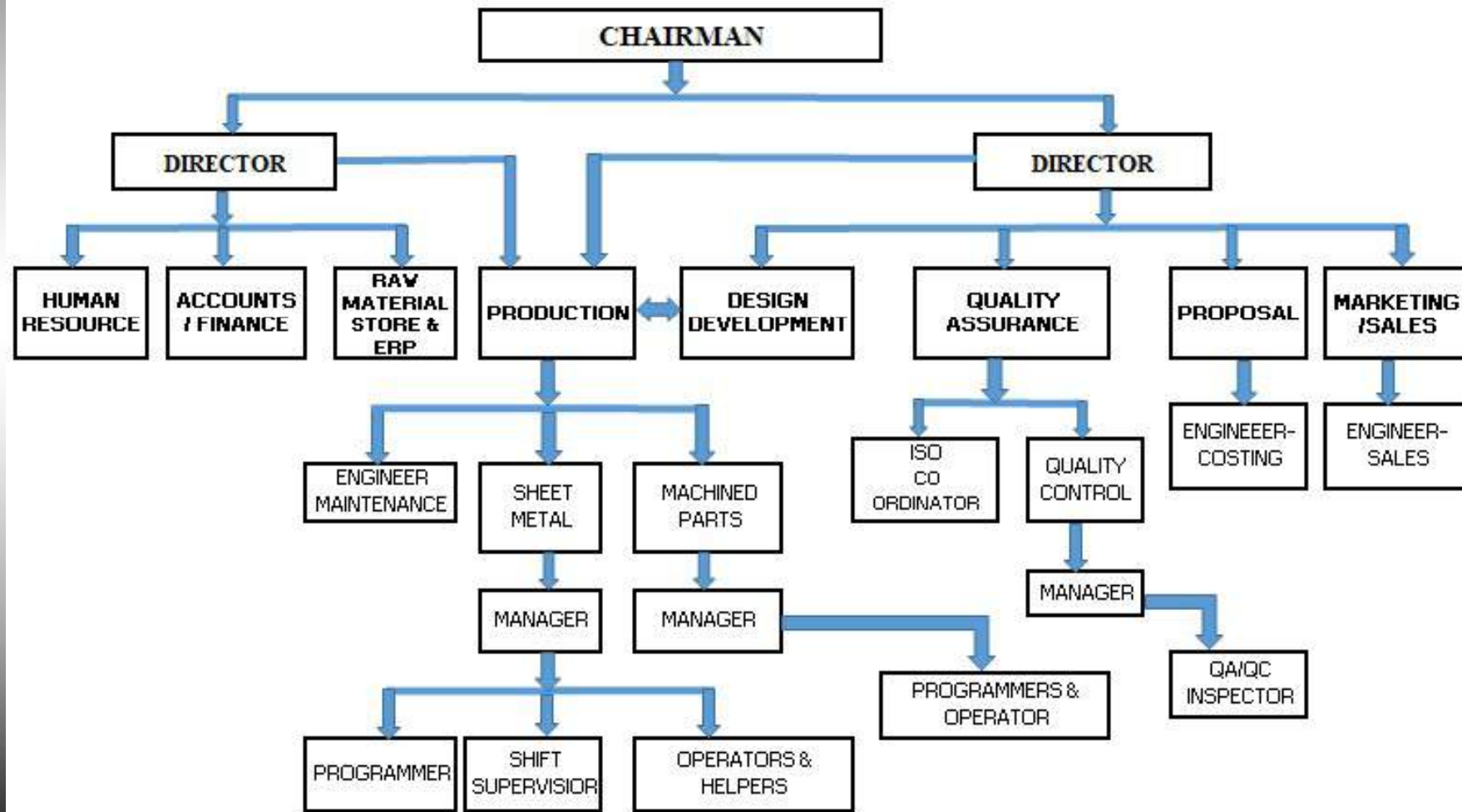
Note: Products entering the European Union are subject to the requirements set forth in the European Directives. It is the responsibility
of the person placing the product on the European market to ensure compliance with applicable Directives. The requirements of
Directives and standards change from time to time and it is the responsibility of the manufacturer to ensure compliance. Our services are
intended to provide you with the data needed to determine compliance, but the person placing the product on the European market still
has the responsibility to ensure each product complies with the applicable Directives. The product liability rests with the manufacturer or
his representative in accordance with Council Directive 85/374/EEC.

This document applies only to the particular sample provided for testing and CE certification and does not permit the use of a
TÜV PRODUCT SERVICE certification mark. It becomes ineffective in the event of changes relating to products, applicable
standards and the Directives.

TÜV SÜD South Asia Pvt. Ltd. • TÜV SÜD House • CE, Sub. Park, Andheri (East) • Mumbai - 400 021 • India

About the company

ORGANIZATIONAL CHART



WHAT WE DO...

Stainless Steel - Sheet Metal

- **OEM's** -Hazardous Area Enclosures
- Weather proof enclosures(IP66 & IK10)
- Instrument Enclosures
- Well Head Control panels
- Customized Fabrication of enclosures of any size.

What we do...

Stainless Steel - Sheet Metal

- Volume tanks
- Instrumentation Bulk
- Fire Proofing for Valve & Actuators (Passive Fire Protection)
- Analyzer/Sampling system Housing
- CCTV Housing/Flood light Housing

What we do...

OEM's for Machined Components

- Control valve internal parts
- On-Off valve parts
- Valve mounting kit and accessories

What we do...

OEMs for Hazardous Area Increased Safety Enclosures

- Control cabinets
- Local control panel
- Junction Boxes



What we do...

Weather proof Enclosures

- IP 66 & IK 10 compliant Enclosures as per **IEC 62208:2011 / EN 62208:2011**
- Range of sizes to choose from. (Refer catalog for standard sizes).



What we do...

Weather proof Enclosures

- Quarter turn locks
- FIP Polyurethane gasket on door and gland plates.
- Welded or screw type mounting brackets.
- Internal and External earthing provided.



What we do...

Instrument Enclosure

- IP 66/65 compliant as per IEC 60529
- Flame retardant EPDM clip-on and window gaskets.
- Polycarbonate glass, 4mm thick.
- Neoprene gaskets for sunshade enclosures.
- Stainless steel clip type locks.
- Door stay.



What we do...

Wellhead Control Panels

- Customized Fabrication of Panels of any size as per requirement.



What we do...

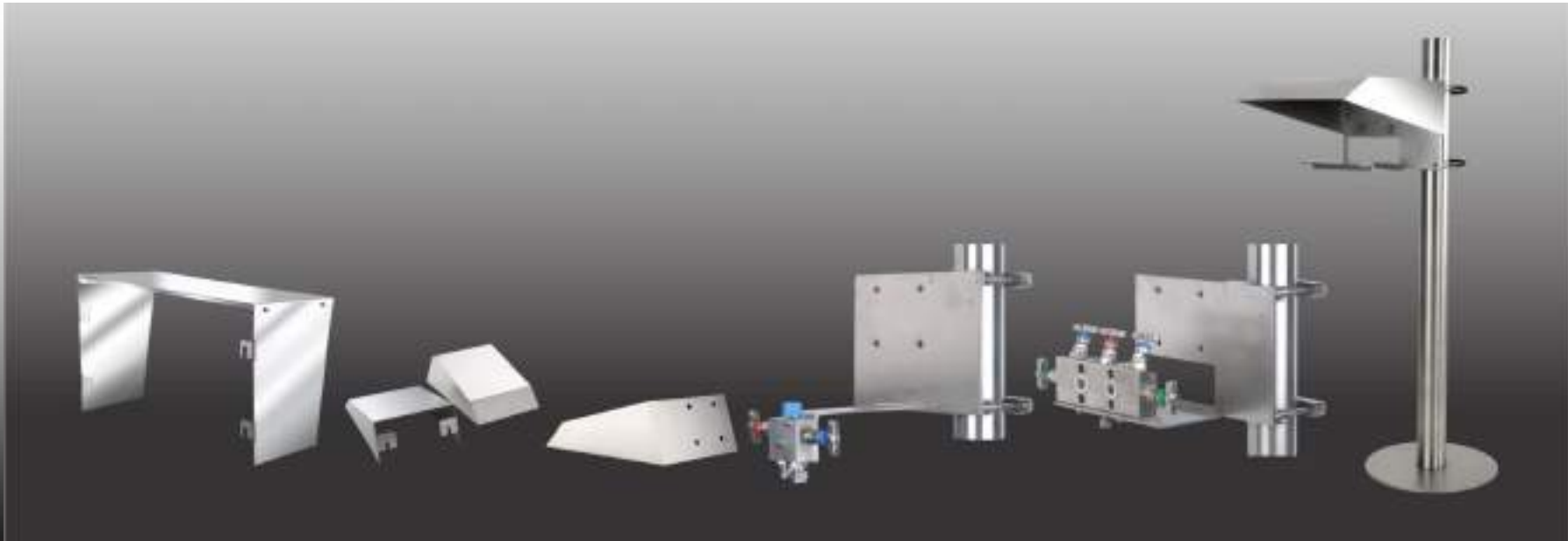
- *Volume Tanks*
- *Fire Proofing boxes for Valves & Actuators*
- *Control Valve test benches*
- *CCTV Housings*



What we do...

Instrumentation bulk

- Mounting brackets
- Sunshades
- As per your requirement!



What we do...

PRADEEP
ENCLOSURES &
MACHINED PARTS

OEMs for Control valve machined parts

- Stainless steel - Any Exotic material

- Stem
- Plug
- Trim
- Cage

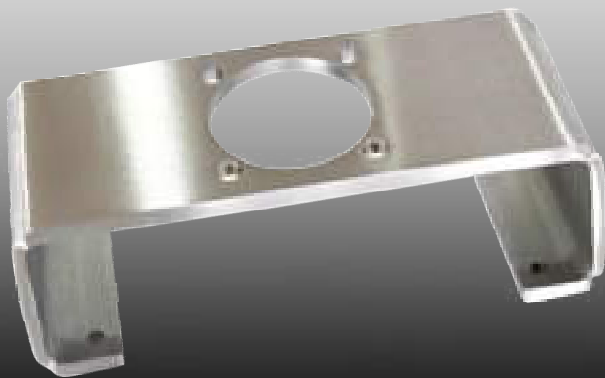


What we do...

OEMs for Mounting kit for control valves

- Positioner coupling device - Mounting brackets

- Mild Steel
- Stainless Steel
- Any exotic material
- Customized Fabrication



PRADEEP STAINLESS INDIA PVT LTD

PRADEEP[®]
ENCLOSURES &
MACHINED PARTS

WHY SHOULD YOU PREFER

PRADEEP[®]

**ENCLOSURES &
MACHINED PARTS**

Our Strength

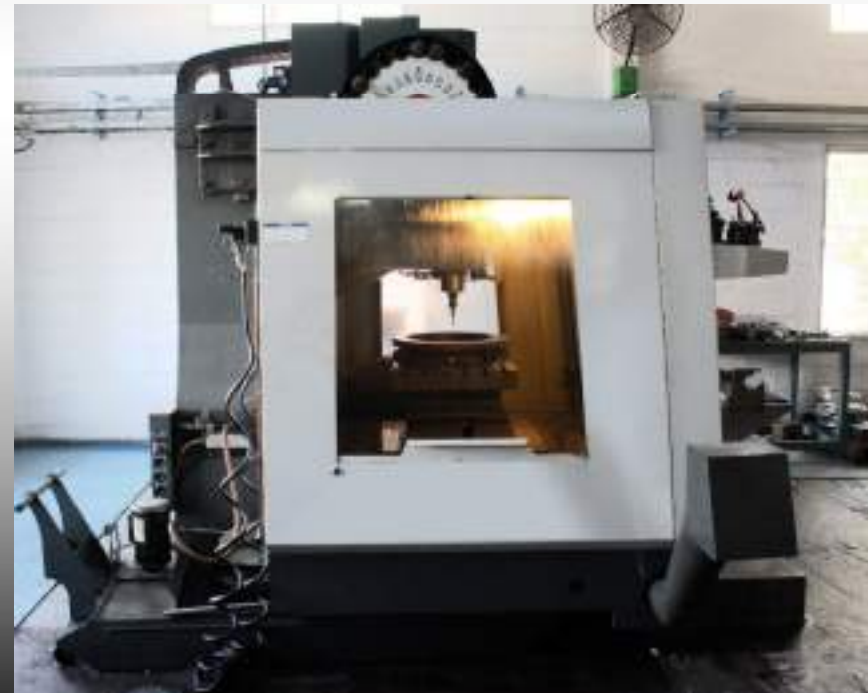
- Over 35 years of experience of working with stainless steel sheet metal and related dies and tools making.
- Design to Raw material to finished goods all done in-house and under one roof.
- Financial strength to hold Raw material stock hence leading to faster delivery.



Our Strength

PRADEEP
ENCLOSURES &
MACHINED PARTS

- VMC machines
- Semi-automatic milling machines
- Conventional Lathes



Our Strength

- Cost advantage as we are strategically located in the Special Economic Zone, India.
 - Duty free import of Raw material, export of Finished goods.
 - Import best quality certified raw material from world renowned factories of **Posco and Thainox**.
 - Annual consumption of 1500 tons of Stainless Steel.
 - More consumption, better negotiation possibilities on Raw material price.
 - Lower manufacturing and operating cost when compared to Middle east and the West.



Our Existing Clients

PRADEEP
ENCLOSURES &
MACHINED PARTS



For enquiries contact

PRADEEP
ENCLOSURES &
MACHINED PARTS



PRADEEP STAINLESS INDIA PVT LTD

Registered Factory & Office:
C3, PHASE II, MEPZ – SEZ, TAMBARAM
Chennai – 600 045.



PRADEEP TRADING COMPANY DMCC

Unit 2426, Level No 1, Jewellery & Gemplex Building
Dubai, United Arab Emirates.

www.pradeepenclosures.com

Contact Person : Mr. Darshan Ramesh



+91 96000 08685

+971 54 355 0304



darshan@pradeepstainless.com